

Dealer Name: \_\_\_\_\_ Customer Tag: \_\_\_\_\_

Spa Manufacturer Brand: \_\_\_\_\_ Model: \_\_\_\_\_ Year: \_\_\_\_\_

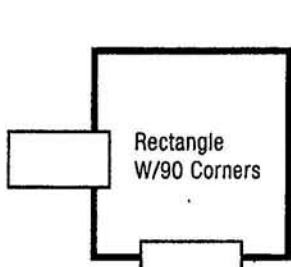
Cover Taper: 3-2" \_\_\_\_\_ 4-3" \_\_\_\_\_ 5-4" \_\_\_\_\_ 5-4" Walk-On \_\_\_\_\_

Cover Design: Bi-Fold: \_\_\_\_\_ Quad Fold: \_\_\_\_\_

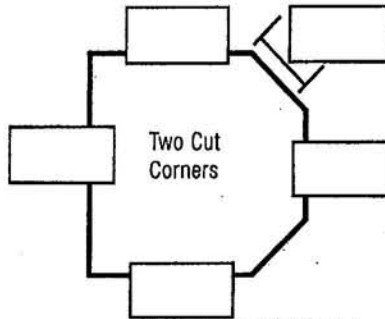
**Skirt Length:** \_\_\_\_\_ Cover Colour: Colour Number: \_\_\_\_\_ Colour Name: \_\_\_\_\_

Cover Liner (If not indicated black will be used) Black: \_\_\_\_\_ Reflective: \_\_\_\_\_

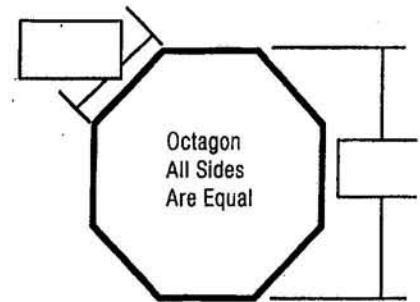
\* Please indicate fold directions. If direction is not indicated we will split the longest measurement.



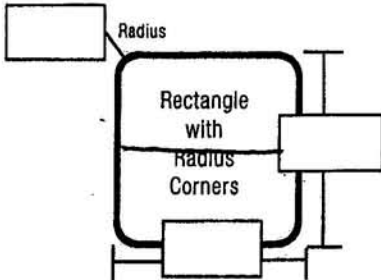
Indicates Strap & Handle Placement



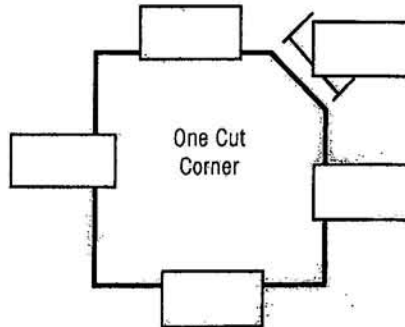
Indicates Strap & Handle Placement



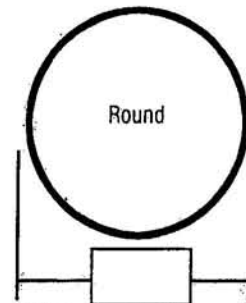
Indicates Strap & Handle Placement



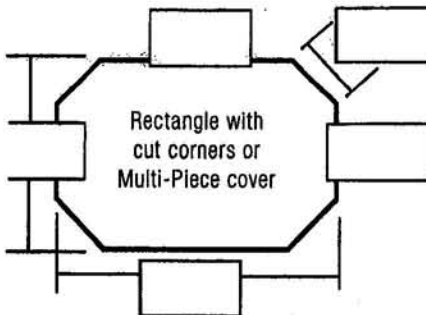
Indicates Strap & Handle Placement



Indicates Strap & Handle Placement



Indicates Strap & Handle Placement



Indicates Strap & Handle Placement

\* Provide drawing for additional shapes.

**H.S.T. Synthetics Ltd.**  
 6630 Edwards Blvd. Mississauga, ON L5T 2V6  
 Tel: 905.670.3432 · Fax: 905.670.3485  
 hstsynthetics@aibn.com  
 www.hstsynthetics.com